

Silicium Slim Wireless



Energy saving



Electric inertia radiators

The new concept in radiant heating

Patented system that combines long wave radiant heating and heat accumulation to effectively reduce the consumption

Manufactured with external **DUAL-KHERR** silicon stone inertia panel to stabilize and homogenize heat to reduce consumption.

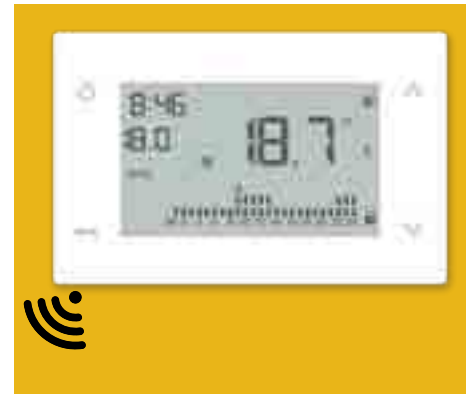
Slim includes a sophisticated wireless heating control thermostat system based on PID technology that restricts consumption.

This control can handle 5 different units and it is fully programmable 24/7.



New WIRELESS Control manager

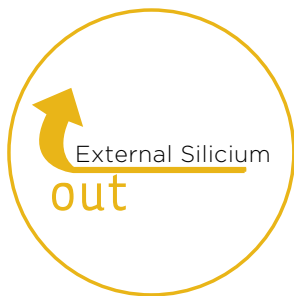
- Wireless connectivity via radio frequency.
- HCC control system based on PID technology and TRIAC interfaces.
- High accurate ambient thermostat $\pm 0,05^{\circ}\text{C}$
- Intuitive and user friendly LCD display with safety lock.
- Display shows real temperature, set temperature, current set program and working mode.
- Working performance selector: Auto mode or manual mode.
- Weekly / daily programmer.
- Open window detector.



Technical features

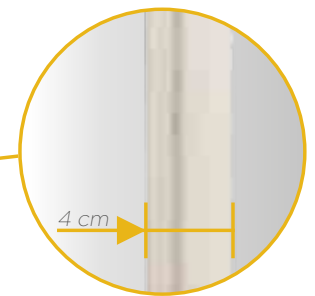
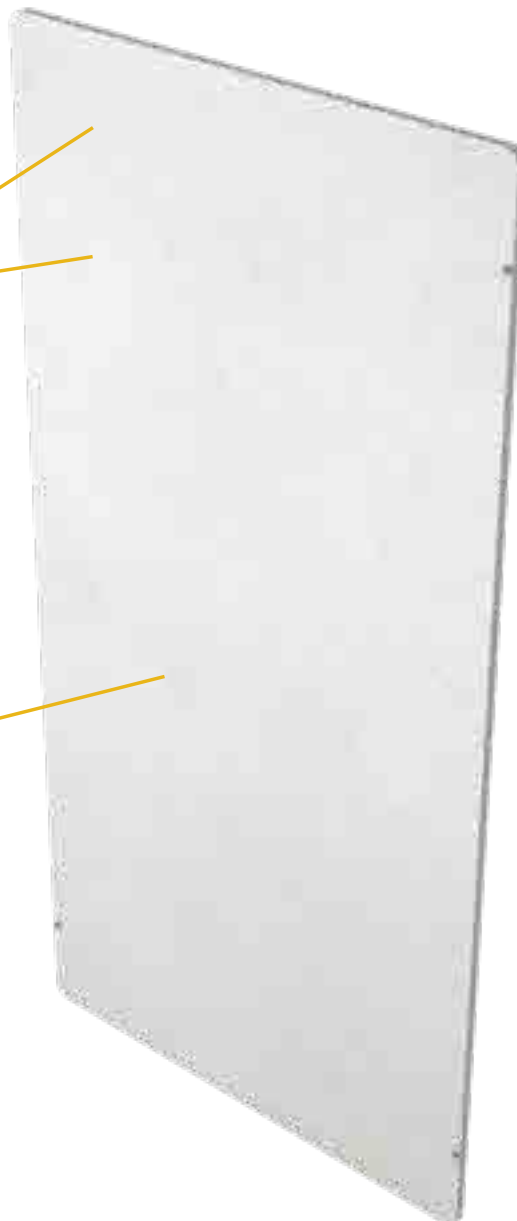


Homogeneous temperature and energy restriction



External heat accumulation Stone panel

DUAL-KHERR



Slim design, powder coated steel structure.



Wireless RF receiver

Dimensions



Features (as per versions)

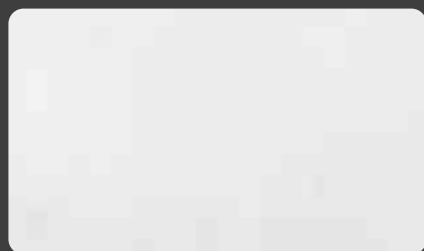
Voltage	230V / 125V
Frequency	50 Hz / 60 Hz
Input	800W (other versions on request)
Connecting plug	Double pole, 15 A / 125-250 VAC
Safety thermostat	Automatic rearm. Range 0° - 90°
Electronic room thermostat	Range 5°C - 30°C
Electric protection	Class II
IP protection	IP 24
Fitting system	Wall fitting, with screws and plugs (6 mm)

Transport information (as per versions)

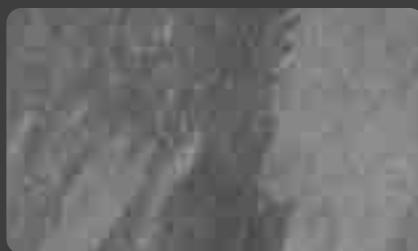
Model	Power (W)	Packaging dimensions (cm)	Weight (Kg)	Units per pallet*	
				FTL	LTL
50x100	800	110x16x62	21	15	12

*FTL: Full truckload. LTL: Less than a truckload

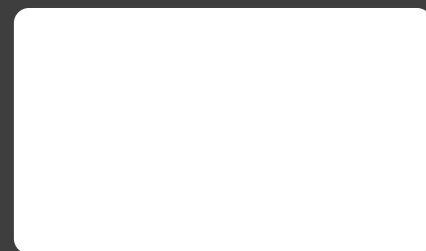
Recommended finishes for Smart models



Sillex Pearl



Sillex Dark



Liberty

